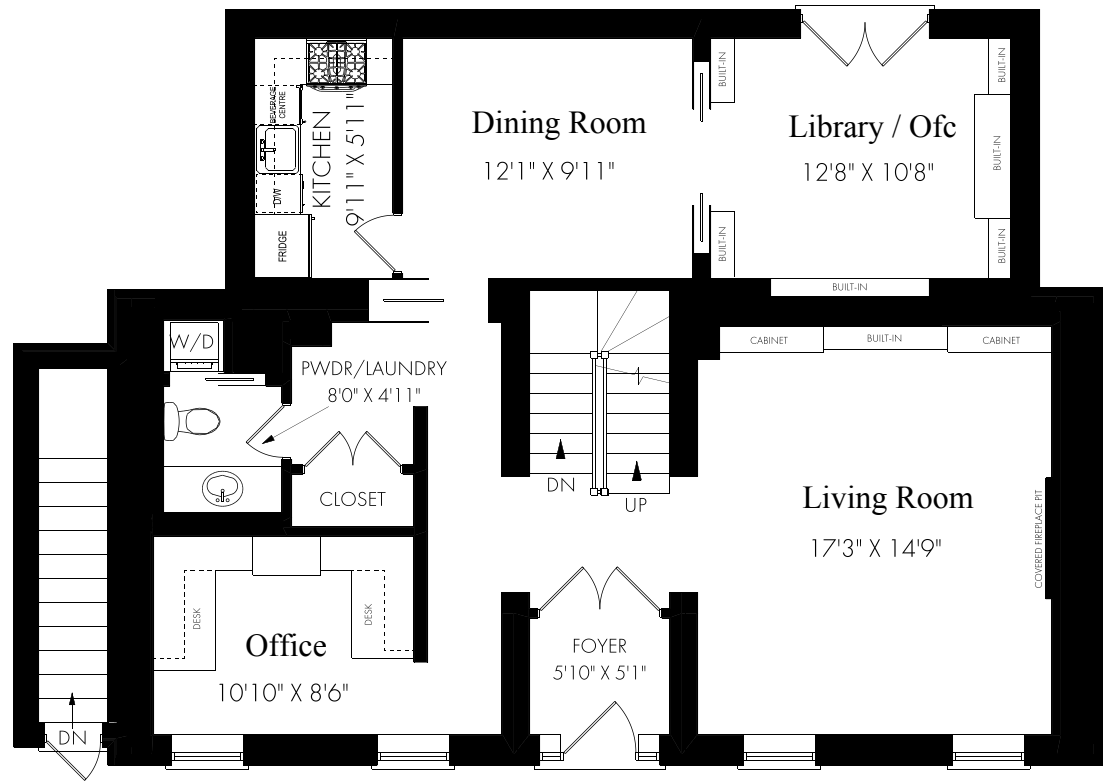


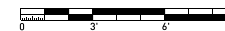
# 905 Queen Street West, Toronto

## FLOOR PLAN



CEILING HEIGHT 9'7"

MAIN FLOOR - 1231 SQUARE FEET

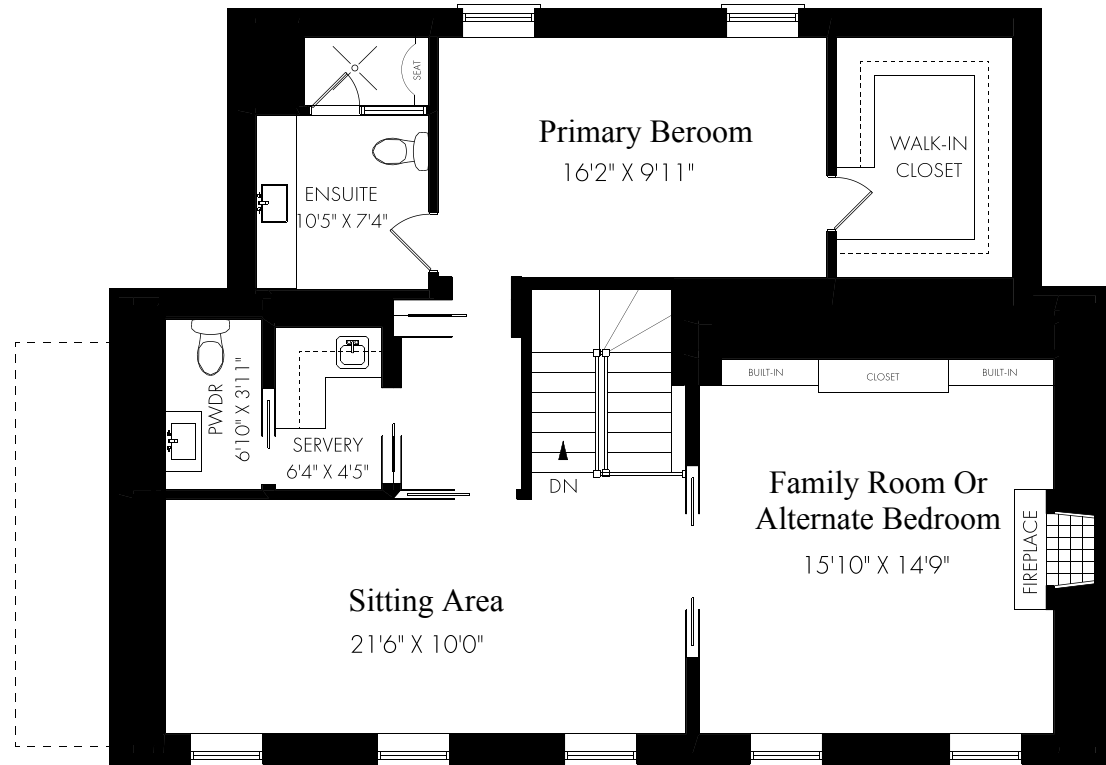


Thursday, October 13, 2022

Note: Although measurements and area believed to be accurate they should be considered approximate. This drawing was prepared by Plans4U for the sole benefit and use by the client. No third party may rely on this drawing without the receipt of reliance letter from Plans4U

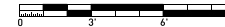
# 905 Queen Street West, Toronto

## FLOOR PLAN



CEILING HEIGHT 9'7"

**SECOND FLOOR - 1231 SQUARE FEET**

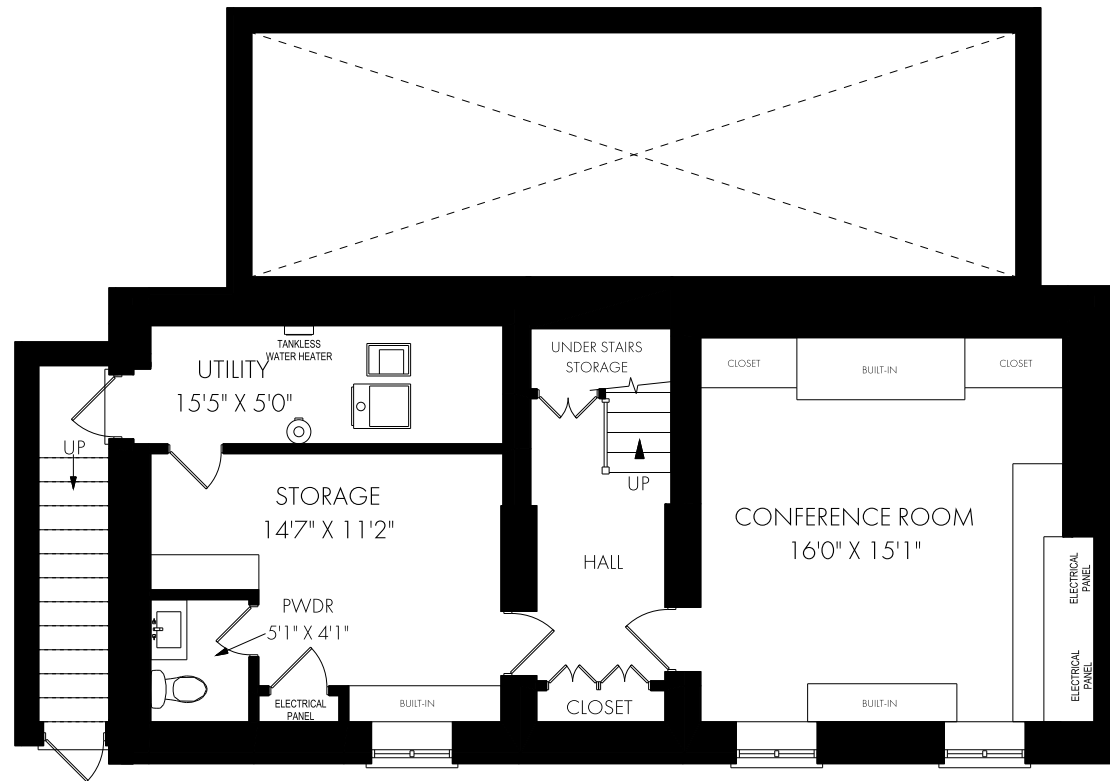


Thursday, October 13, 2022

Note: Although measurements and area believed to be accurate they should be considered approximate. This drawing was prepared by Plans4U for the sole benefit and use by the client. No third party may rely on this drawing without the receipt of reliance letter from Plans4U

# 905 Queen Street West, Toronto

## FLOOR PLAN



LOWER LEVEL - 851 SQUARE FEET



Thursday, October 13, 2022

Note: Although measurements and area believed to be accurate they should be considered approximate. This drawing was prepared by Plans4U for the sole benefit and use by the client. No third party may rely on this drawing without the receipt of reliance letter from Plans4U